

Hunting and Trapping

- Trapping allowed only with special use permit. Contact area manager
- Only portable stands are allowed from September 1 through January 31. Unattended stands must be plainly labeled on durable material with the full name and address or Conservation number of the owner and be removed from the area by February 1st. Use of nails, screw-in steps, and any material or method that would damage the tree is prohibited.
- Field trials are prohibited.
- Blinds may be constructed on-site only from willows (Salicaceae) and nonwoody vegetation.
- Trail and game cameras are prohibited.
- Deer and turkey regulations are subject to annual changes. Please refer to Spring Turkey or Fall Deer and Turkey summaries for current regulations.



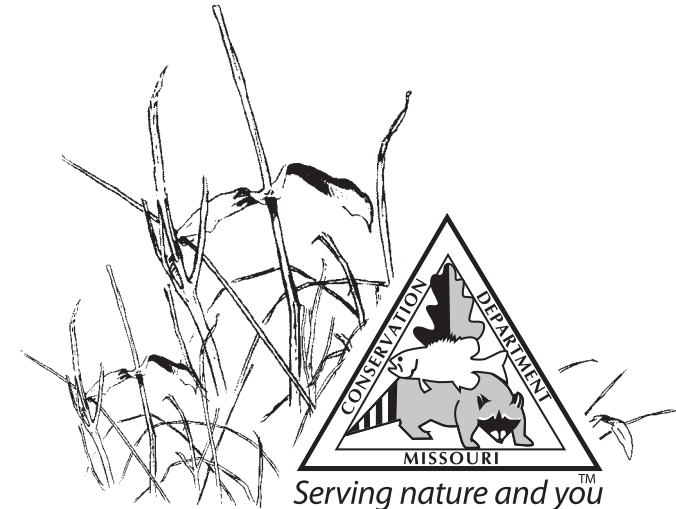
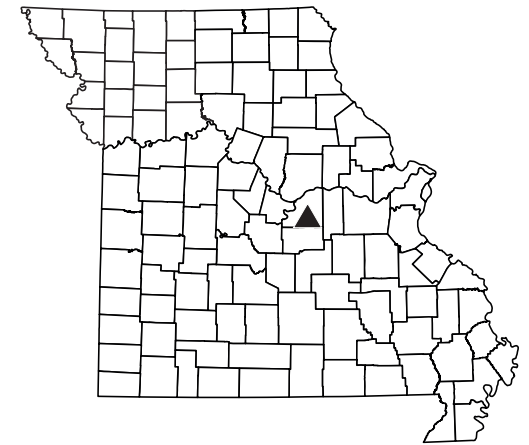
For local information, contact:
Missouri Department of Conservation
USDA Service Center
1315 East Main
Linn, MO 65051
(573)897-3797

Visit us at:
www.mdc.mo.gov

Additional area information is posted on bulletin boards located in parking areas and area offices.

Ben Branch Lake

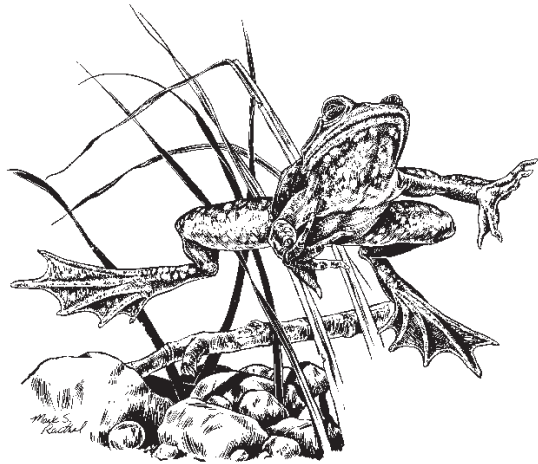
CONSERVATION AREA



11/2016

(Regulations are from the Wildlife Code of Missouri and selected statutes of the State of Missouri. Special area regulations are in Chapter 11 of the Wildlife Code. A free printed copy of the Wildlife Code, which lists most area regulations, is available from the Conservation Department. Chapter 11 in its entirety is available at www.sos.mo.gov/adrules/csr/current/3csr/3csr.asp.) Equal opportunity to participate in and benefit from programs of the Missouri Department of Conservation is available to all individuals without regard to their race, color, national origin, sex, age or disability. Questions should be directed to the Department of Conservation, P.O. Box 180, Jefferson City, MO 65102, (573) 751-4115 (voice) or 800-735-2966 (TTY), or to the U.S. Fish and Wildlife Service Division of Federal Assistance, 4401 N. Fairfax Drive, Mail Stop: MBSP-4020, Arlington, VA 22203.

MISSOURI DEPARTMENT OF CONSERVATION



About this Area

Ben Branch Lake Conservation Area is in Osage County, ten miles north of Linn off Missouri Highway 89. The Conservation Department purchased most of this 512-acre area in 1978. With additional acquisition the area is now 563 acres. In 1983, 39-acre Ben Branch Lake was constructed. The lake began filling in October of that year and was opened to fishing in 1985. Approximately 478 acres (83%) of the area is heavily wooded. The primary tree species on good soils are white and black oak. Post oak and black oak dominate the poorer soils. Facilities on the lake include a (12-vehicle) pull-off camping area, a fishing jetty, and privy accessible to persons with disabilities, and two large parking areas. During your visit to Ben Branch Lake Conservation Area, you may view various land management practices being implemented to improve the forest resource and enhance natural communities, such as woodlands and savannas. Vegetation management provides improved wildlife habitat. Depending on the natural plant community the land will support you may see trees being thinned or prescribed burning and even some cropping of the flatter areas below the dam. All practices are implemented to main-

tain water quality of Ben Branch Lake's watershed. Watch for vegetation changes over the years and observe plant communities changing and wildlife responding to these changes.

Recreational Opportunities

Bird Watching – Fishing – Hiking – Camping – Hunting – Outdoor Photography – Wildlife Viewing

Rules and Regulations

Open for public use from 4:00 a.m. to 10:00 p.m.; hunting, fishing, trapping, camping, dog training, launching and landing boats allowed 24 hours a day on areas where these activities are permitted.

- Digging of roots is prohibited on all Conservation Areas.
- Nuts, berries, fruits, edible wild greens and mushrooms may be taken only for personal consumption.
- Guiding for pay is prohibited on department areas.
- Use of fireworks is prohibited.
- Any activities with groups of 10 or more need a special use permit. Contact area manager.
- Camping is allowed anytime in designated camping areas. These may or may not have defined campsites. Seasonal closures and restrictions may apply.
- Target shooting not allowed.
- Bicycles are permitted only on roads and trails open to vehicular traffic, unless otherwise posted.
- Vehicles are only permitted on public roadways and in parking lots.

Fishing and Boating

Fishing is permitted under statewide regulations. The following special regulations also apply.

- Pole and line fishing only is permitted. Anglers may use no more than three poles at one time. Daily limits: channel, blue and flathead catfish in the aggregate - 4; black bass - 6; crappie - 30; all other fish, statewide limits, but not to exceed 20 in the aggregate. Black bass more than 12 inches but less 15 inches total length must be returned to the water unharmed immediately after being caught. Largemouth bass, channel catfish, bluegill, green sunfish, and crappie are the typical species caught.
- Seining or trapping live bait, including tadpoles, is prohibited in lakes and ponds.
- Boats, including sailboats, may be used on lakes and ponds designated as open to boats. Boats may not be left unattended overnight. Only electric motors are permitted on lakes and ponds of less than 70 acres.

