

# Frank E. Wagner Conservation Area

## Ten-Year Area Management Plan FY 2019-2028



*Joel W. Pruthi*

Wildlife Division Chief

*9/13/2018*

Date

## Frank E. Wagner Conservation Area Management Plan Approval Page

### PLANNING TEAM

Chris Freeman, Wildlife Management Biologist

Eric Dennis, Fisheries Management Biologist

Shane Strommer, Resource Forester

Steve Buback, Natural History Biologist

Tammy Cornine, Conservation Agent

Adam Brandsgaard, Education Consultant

Lee Metcalf, Private Land Conservationist

### NORTHWEST REGION

RCT Chair

  
\_\_\_\_\_  
*Signature*

9-11-18  
*Date*

### WILDLIFE DIVISION

Wildlife Management Chief

  
\_\_\_\_\_  
*Signature*

9/12/18  
*Date*

## OVERVIEW

- **Official Area Name:** Frank E. Wagner Conservation Area, #9241
- **Year of Initial Acquisition:** 1992
- **Acreage:** 130 acres
- **County:** Ray
- **Region:** Northwest
- **Division with Administrative Responsibility:** Wildlife
- **Division with Maintenance Responsibility:** Wildlife
- **Statements of Purpose:**
  - A. Strategic Direction**

Provide, develop, manage, and protect quality upland habitat and associated wildlife species while providing a variety of outdoor recreational opportunities for the public.
  - B. Desired Future Condition**

The desired future condition of Frank E. Wagner Conservation Area (CA) is an ecologically functional system of forest/woodlands, grasslands, and old field habitats.
  - C. Federal Aid Statement**

N/A

## GENERAL INFORMATION AND CONDITIONS

- I. Special Considerations**
  - A. Priority Areas:** Crooked River Fisheries Priority Watershed
  - B. Natural Areas:** None
  
- II. Important Natural Features and Resources**
  - A. Species of Conservation Concern:** None observed.
  - B. Caves:** None
  - C. Springs:** None
  - D. Other:** This area lies within the Crooked River Woodland/Forest Scarped Hills Landtype Association. This landtype association consists of moderately broad to gently rolling uplands, and angular, stepped valley sides created by thin outcroppings of Pennsylvanian limestones and shale. Historically, prairie was present on the narrow uplands with the majority of the landtype association comprised of a woodland/forest mosaic with limestone glades (Nigh & Schroeder, 2002).
  
- III. Existing Infrastructure**
  - Two parking lots
  - Two individual campsites

- World War II Prisoners of War Monument
- One non-stocked pond (0.5 acres)

#### IV. Area Restrictions or Limitations

- A. Deed Restrictions or Ownership Considerations:** None
- B. Federal Interest:** Federal funds may be used in the management of this land. Fish and wildlife agencies may not allow recreational activities and related facilities that would interfere with the purpose for which the State is managing the land. Other uses may be acceptable and must be assessed in each specific situation.
- C. Easements:** Water and electric easements exist on the area.
- D. Cultural Resources Findings:** No known cultural resources.
- E. Endangered Species:** None observed.
- F. Boundary Issues:** None

### MANAGEMENT CONSIDERATIONS

#### V. Terrestrial Resource Management Considerations

##### **Challenges and Opportunities:**

- 1) Control invasive plant species while managing grasslands and promoting a diverse plant community.
- 2) Maintain and promote healthy upland and bottomland forests.
- 3) Promote early successional habitat and provide a high-energy food source for wildlife.
- 4) Maintain old field habitats to provide brood rearing and nesting habitat.

##### **Management Objective 1: Manage grasslands to provide a diverse plant community of warm- and cool-season grasses, legumes, forbs, and bare ground.**

Strategy 1: Maintain grassland habitats using a combination of management techniques, including, but not limited to, prescribed burning, mechanical and chemical treatment, disking, mowing and over seeding. (Wildlife)

Strategy 2: Treat invasive grasses and forbs using a combination of management techniques, including, but not limited to, mechanical removal, chemical treatment, disking, and mowing. (Wildlife)

##### **Management Objective 2: Maintain and promote healthy upland and bottomland forests to optimize wildlife habitat and forest health.**

Strategy 1: Implement forest prescriptions, as needed, based on a site visit in 2018 with the resource forester and area manager. (Forestry, Wildlife)

Strategy 2: Utilize a variety of sustainable forest management techniques to promote healthy forest and woodland communities, including, but not limited to, timber harvesting, forest thinning, firewood cutting, salvage cuttings, tree planting, seeding, and prescribed burning. (Forestry)

Strategy 3: Conduct woodland burns, as appropriate and according to the burn plans. (Wildlife)

**Management Objective 3: Utilize cropping and disturbance in established crop fields to promote desired early successional habitat and to provide a high-energy food source for wildlife in a manner that complies with the Natural Resources Conservation Service soil conservation plan and promotes small game.**

Strategy 1: Employ a four-year or more rotation (corn/soybeans/wheat/idle or clover) on most upland fields and use small grains and idle acres as appropriate. (Wildlife)

Strategy 2: Disturb open lands and utilize idle fields to promote brood-rearing habitat. (Wildlife)

**Management Objective 4: Maintain old field areas to provide nesting and brood-rearing habitat, such as bare ground, annual forbs, warm- and cool- season grasses, and shrubs.**

Strategy 1: Maintain old field habitats in various successional stages, using a combination of management techniques, including, but not limited to, prescribed burning, mechanical tree removal, disking, mowing, and over-seeding. (Wildlife)

**VI. Aquatic Resources Management Considerations**

There are no significant aquatic resources present on this area.

**VII. Public Use Management Considerations**

Frank E. Wagner CA is managed primarily for upland wildlife species and consequently receives significant public use during the spring turkey and fall firearms deer seasons. Other upland wildlife, such as bobwhite quail and cottontail rabbits, are pursued to a lesser extent, based on reports from wildlife and protection staffs.

**Challenges and Opportunities:**

- 1) Promote diverse recreational opportunities while protecting the area's natural resources.
- 2) Provide quality hunting and viewing opportunities.
- 3) Improve educational and interpretive opportunities.

- 4) Build relationships with neighboring landowners.

**Management Objective 1: Promote diverse recreational opportunities on the area that are consistent with defined management objectives and sensitive to the natural communities and features of the area.**

Strategy 1: Maintain all parking lots, camping areas, bulletin boards, and service roads to provide an enjoyable experience for area users. (Wildlife)

Strategy 2: Annually review Missouri Atlas database to maintain current and updated information for the public. (Wildlife)

**Management Objective 2: Provide quality public hunting and viewing opportunities.**

Strategy 1: Conduct annual management activities that will provide habitat for a diversity of species. (Wildlife)

**Management Objective 3: Improve educational and interpretive opportunities.**

Strategy 1: Communicate to the public recreational opportunities (e.g., using brochures, Missouri Atlas database). (Wildlife)

Strategy 2: Communicate to teachers, students, scout groups, and youth groups the uniqueness of the area to facilitate its use as a possible destination for ecology classes, school programs, and workshops. (Outreach and Education)

**Management Objective 4: Facilitate a good working relationship with neighboring landowners.**

Strategy 1: Work with neighbors to minimize any boundary, trespass or any other issues affecting Frank E. Wagner CA or private property. (Wildlife)

Strategy 2: Promote habitat management on neighboring landowner properties. (Private Land Services)

**VIII. Administrative Considerations**

**Challenges and Opportunities:**

- 1) Maintain area infrastructure at current levels.
- 2) Consider acquisition of land, when available.

**Management Objective 1: Maintain area infrastructure at current levels.**

Strategy 1: Maintain area infrastructure in accordance with Missouri Department of Conservation (Department) guidelines. (Wildlife)



## APPENDICES

### Area Background:

Frank E. Wagner Conservation Area is in Ray County, about 1 mile southeast of Millville. The Department acquired this area in 1992 and manages it to maintain upland habitat and provide the public opportunities for hunting, viewing, studying, and photographing upland plants and animals.

Frank E. Wagner, a former World War II prisoner of war, donated this area to the Department in memory of all American prisoners of war.

### Current Land and Water Types:

Land/Water Types	Acres	% of Area
Forest/Woodland	50	38
Grassland	40	31
Old Field	40	31
Permanent Water	<1	<1
<b>Total</b>	<b>130</b>	<b>100</b>

### Public Input Summary:

The draft Frank E. Wagner Conservation Area Management Plan was available for a public comment period March 1–31, 2018. The Missouri Department of Conservation received comments from one respondent (Appendix A). The Frank E. Wagner Conservation Area Planning Team carefully reviewed and considered these ideas as they finalized this document. A brief summary of public input themes, including how they were incorporated or why they were not, can be found below. Rather than respond to each individual comment, comments are grouped into general themes and are addressed collectively.

Department responses to themes and issues identified through the Frank E. Wagner Conservation Area Management Plan public comment period.

### Suggests making the conservation area a Quail Focus Area.

Due to the small size of this area (130 acres), the limited quality early successional habitat around this conservation area, and current strategic guidance, this area does not constitute a high priority for allocating staff time and expense for intensive early successional management. Habitat work on the area is conducted as other priorities within the district are completed.



**Suggests removing overgrown brush and providing food plots at the area.**

Due to the small size of this area (130 acres), the limited quality early successional habitat around this conservation area, and current strategic guidance, this area does not constitute a high priority for allocating staff time and expense for intensive early successional management.

**References:**

Nigh, T.A., & Schroeder, W.A. (2002). *Atlas of Missouri ecoregions*. Jefferson City, MO: Missouri Department of Conservation.

**Maps:**

Figure 1: Area Map

Figure 2: Infrastructure and Public Use Facilities

Figure 3: Easement Map

Figure 4: Habitat Cover Types

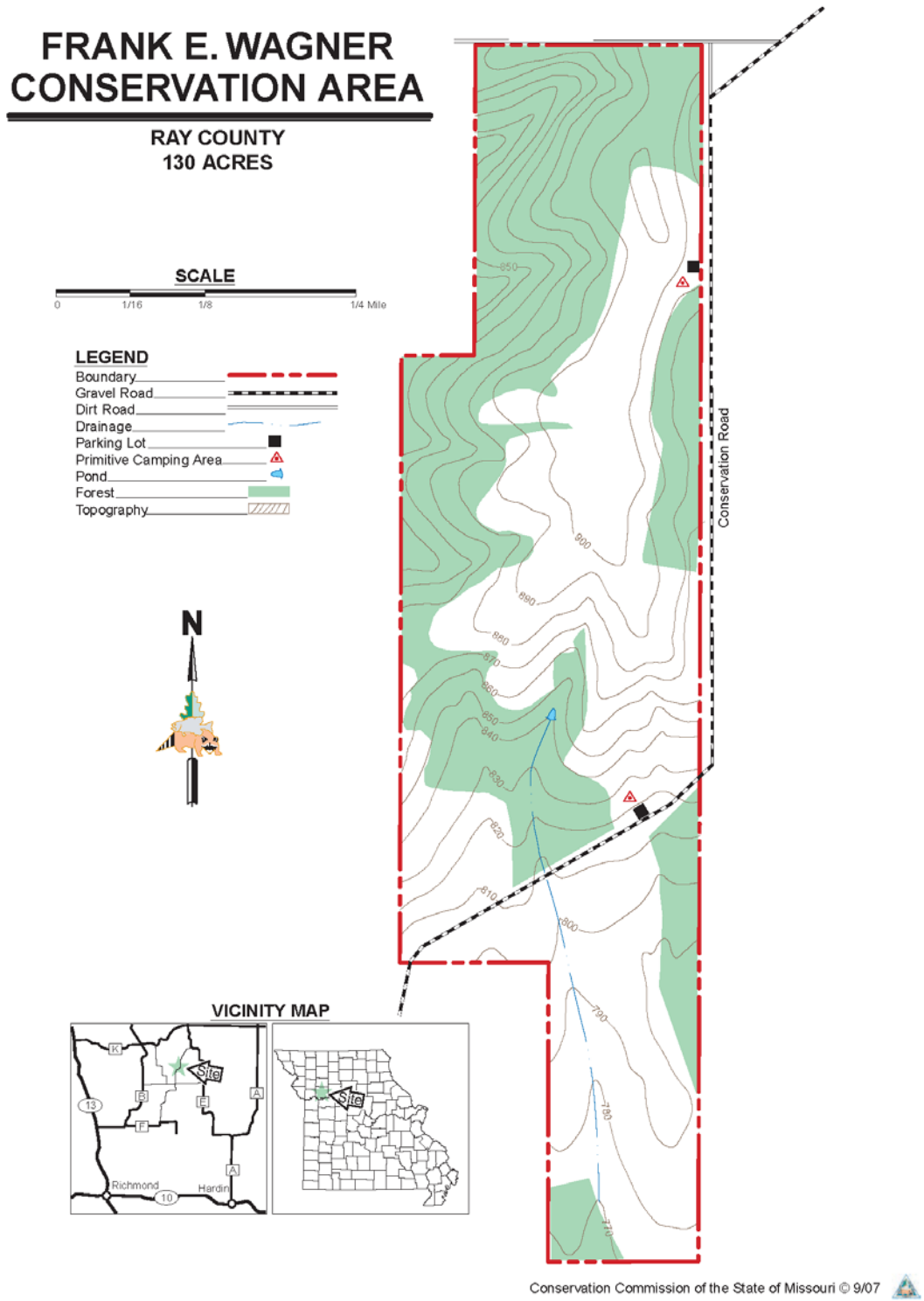
Figure 5: Topographic Map

Figure 6: Soils Map

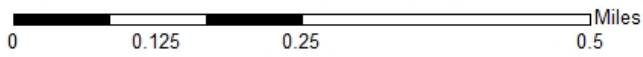
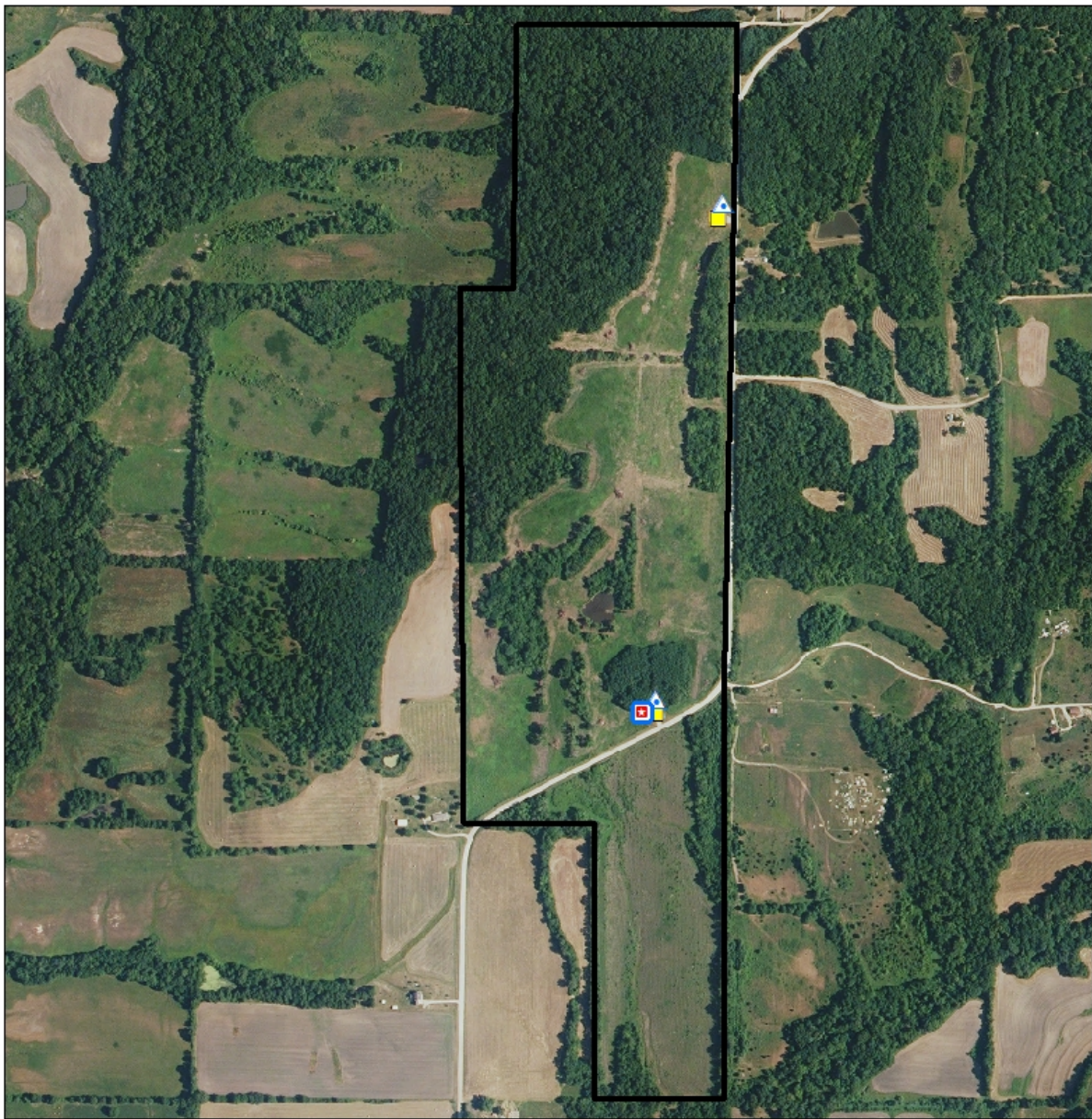
**Additional Appendices:**

Appendix A: Frank E. Wagner Conservation Area Management Plan Public Comments





Figure 1: Area Map



**Figure 2: Infrastructure and Public Use Facilities**

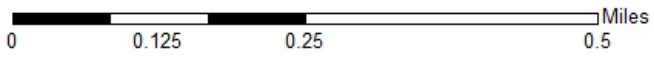
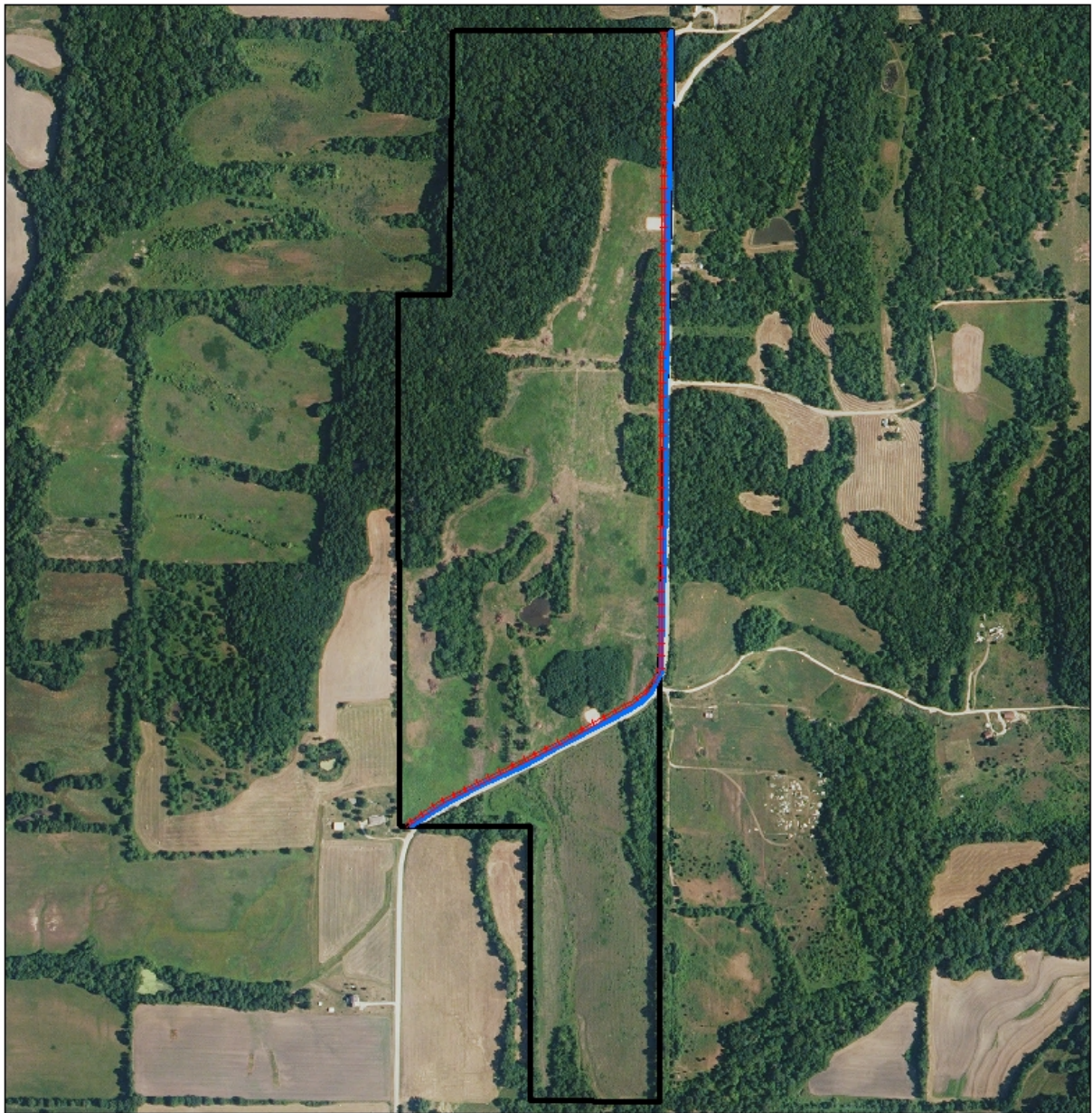


**Legend**




-  American Ex-POW Monument
-  Parking Lot
-  Primitive Camping
-  Wagner CA Boundary



**Figure 3: Easement Map**



**Legend**

-  Water Line
-  Power Pole/Line
-  Wagner CA Boundary



**Figure 4: Habitat Cover Types**

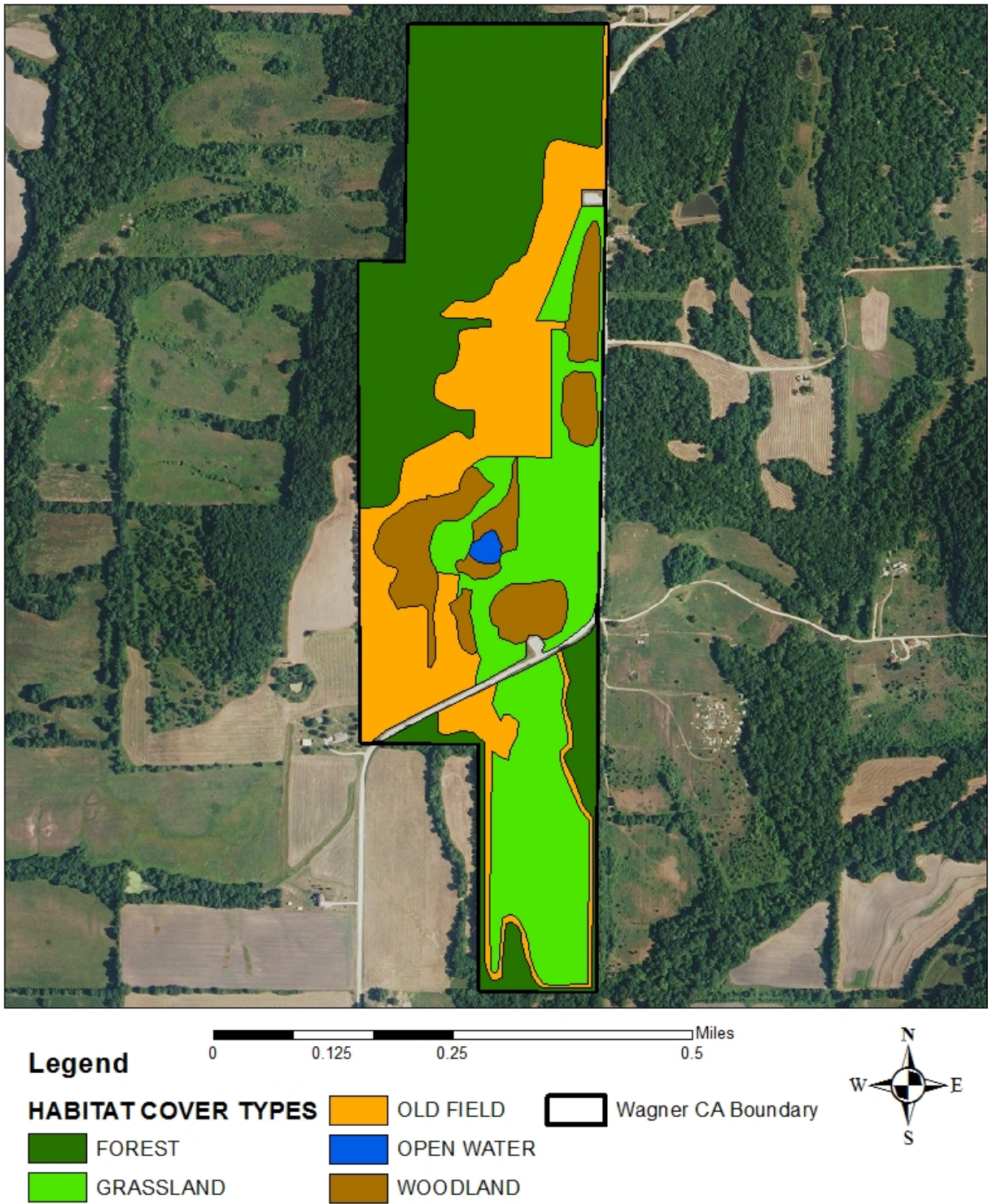
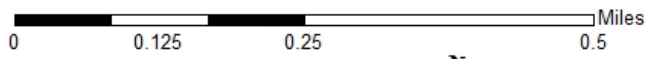
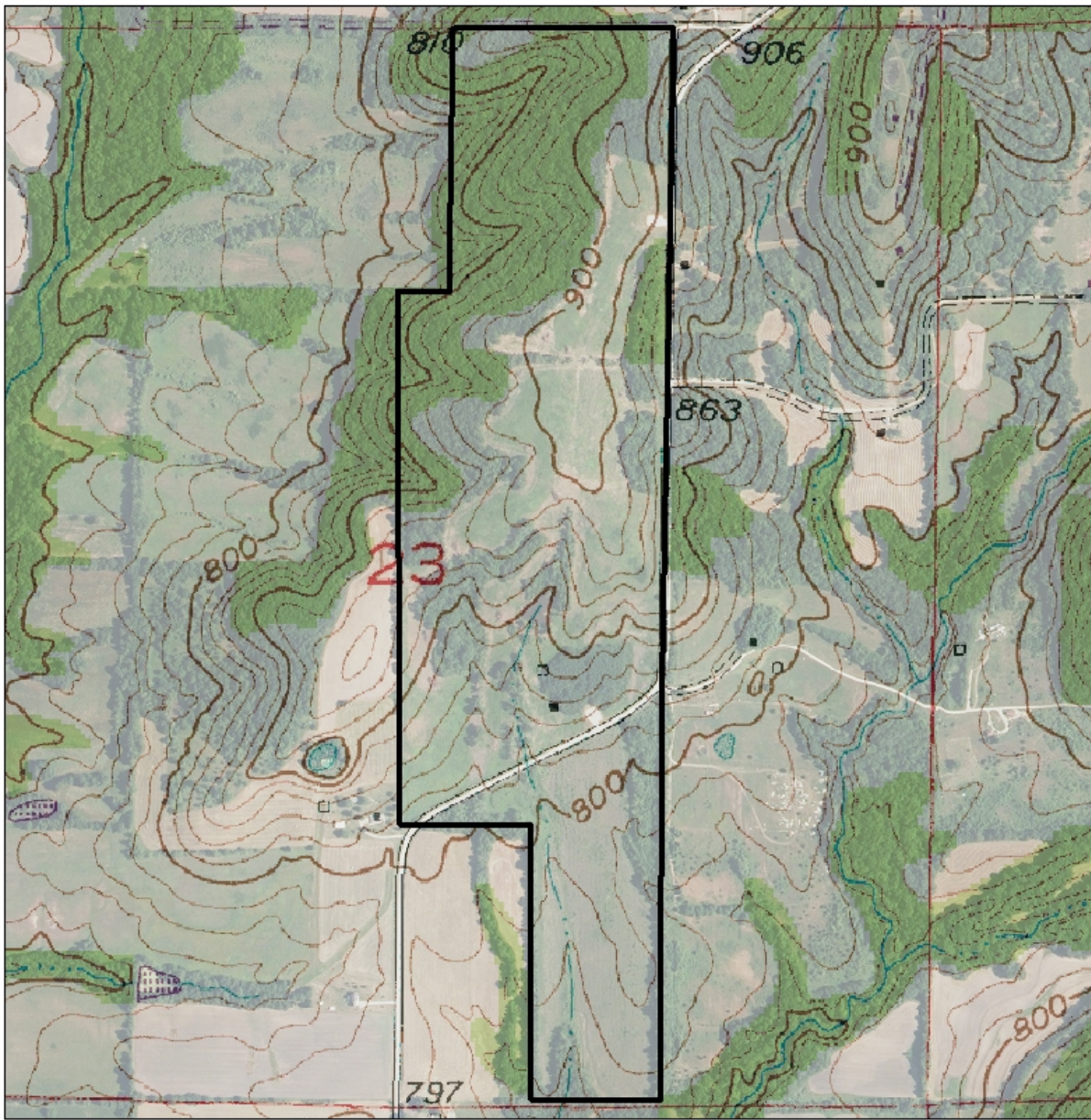



Figure 5: Topographic Map

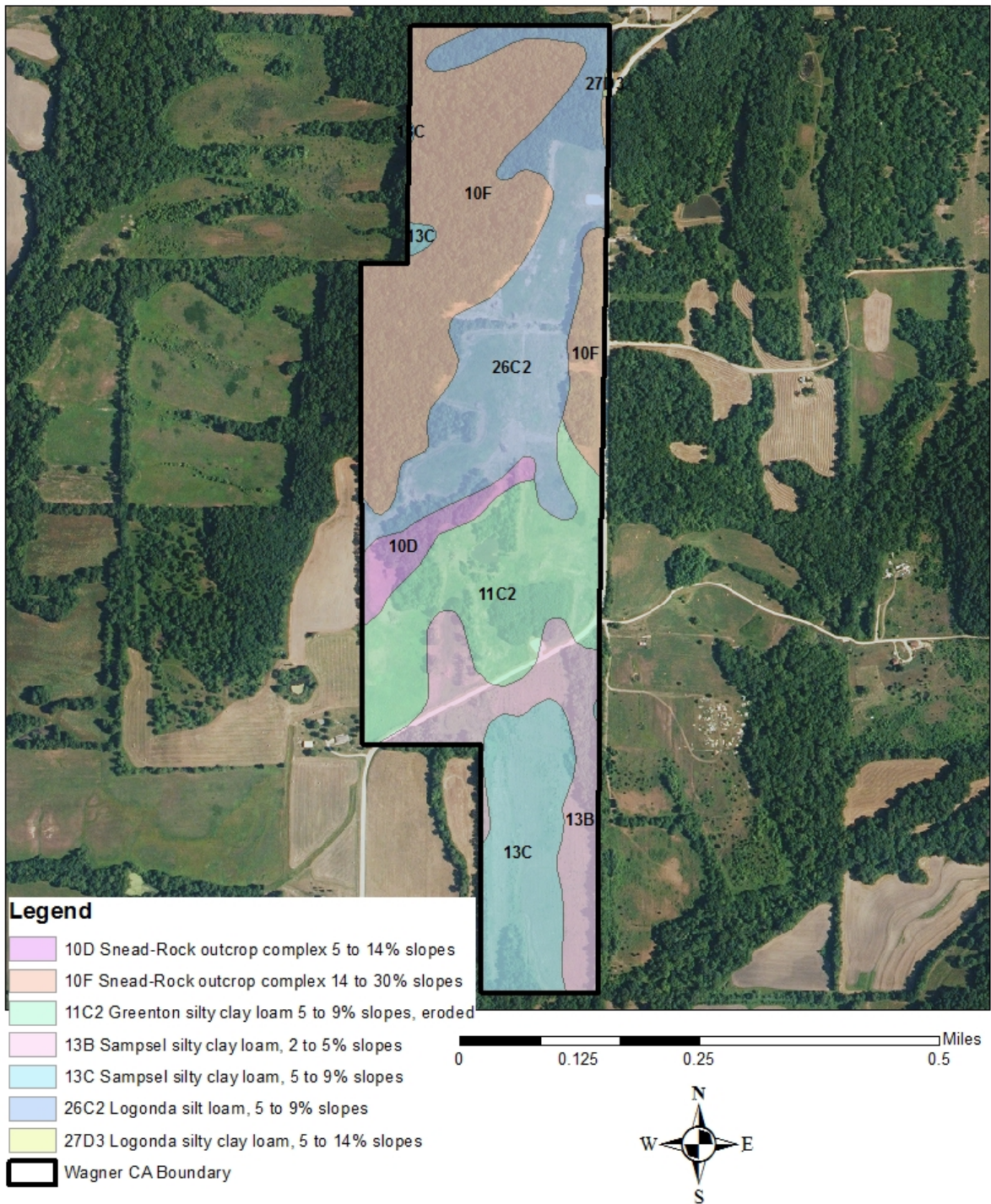


**Legend**

 Wagner CA Boundary



**Figure 6: Soils Map**



**Appendix A: Frank E. Wagner Conservation Area Management Plan Public Comments**

Received during public comment period (March 1–31, 2018):

Personally I would love for Wagner to become one of the quail focus areas! Regardless of the direction you decide to go with it I do hope it is managed better in the future than it currently is. Most of the area is unusable, just overgrown brush and from what I can see no food plots.