

# Gallatin Conservation Area

## Twenty-Year Area Management Plan

FY 2017-2036



  
\_\_\_\_\_  
Wildlife Division Chief

*15 FEB 2017*  
\_\_\_\_\_  
Date

## Gallatin Conservation Area Management Plan Approval Page

### PLANNING TEAM

Brian Gilbert, Wildlife Management Biologist

Shane Strommer, Resource Forester

Matt Engel, Fisheries Management Biologist

Steve Buback, Natural History Biologist

Nate Mechlin, Private Land Conservationist

Alan Bradford, Conservation Agent

### NORTHWEST REGION

RCT Chair

  
\_\_\_\_\_  
Signature

01/23/17  
Date

### WILDLIFE DIVISION

Wildlife Management Chief

  
\_\_\_\_\_  
Signature

1/30/17  
Date

## OVERVIEW

- **Official Area Name:** Gallatin Conservation Area, # 6903
- **Year of Initial Acquisition:** 1969
- **Acreage:** 670 acres
- **County:** Daviess
- **Division with Administrative Responsibility:** Wildlife
- **Division with Maintenance Responsibility:** Wildlife
- **Statements of Purpose:**
  - A. Strategic Direction**

Manage for a wide range of game and non-game wildlife species, with emphasis on small game and compatible recreational opportunities.
  - B. Desired Future Condition**

The desired future condition for Gallatin Conservation Area (CA) is a wildlife-abundant, mixed agricultural/grassland/woodland landscape that provides outdoor recreation.
  - C. Federal Aid Statement**
    - This area, or a portion thereof, was acquired with Pittman-Robertson Wildlife Restoration funds to restore and manage wildlife, conserve, and restore suitable wildlife habitat and provide public access for hunting or other wildlife-oriented recreation.
    - This area, or a portion thereof, was acquired with Land and Water Conservation Fund dollars to provide land or facilities for public outdoor recreation.

## GENERAL INFORMATION AND CONDITIONS

- I. Special Considerations**
  - A. Priority Areas:** Marrowbone Fisheries Priority Watershed
  - B. Natural Areas:** None
  
- II. Important Natural Features and Resources**
  - A. Species of Conservation Concern:** None observed.
  - B. Caves:** None
  - C. Springs:** Yes, records kept with Missouri Department of Conservation (Department) natural history biologist.
  
- III. Existing Infrastructure**
  - Three gravel parking lots
  - One primitive camping site
  - One storage building

- One shotgun shooting (patterning) range
- One rifle shooting range

#### IV. Area Restrictions or Limitations

**A. Deed Restrictions or Ownership Considerations:** None

**B. Federal Interest:**

- Uses of land acquired with federal funds may not interfere with the purpose for which it was acquired. Federal funds may also be used in the management of this land. Fish and wildlife agencies may not allow recreational activities and related facilities that would interfere with the purpose for which the State is managing the land. Other uses may be acceptable and must be assessed in each specific situation.
- This land must provide land/facilities for public outdoor recreation in perpetuity. Federal funds may also be used in the management of this land. Fish and wildlife agencies may not allow recreational activities and related facilities that would interfere with the purpose for which the State is managing the land. Other uses may be acceptable and must be assessed in each specific situation.

**C. Easements:** Waterline easement with Daviess County Water Supply. (Figure 2)

**D. Cultural Resources:** No known cultural resources.

**F. Endangered Species:** None observed.

**G. Boundary Issues:** None

### MANAGEMENT CONSIDERATIONS

#### V. Terrestrial Resource Management Considerations

Since the initial purchase of Gallatin CA, the open areas have been managed for early successional habitat. Methods used to achieve this are mowing, strip disking, prescribed fire, and herbicide applications. An inventory of the forest/woodland was conducted in 2004. Since that time, all management prescriptions have been implemented. (Figure 3)

#### **Challenges and Opportunities:**

- 1) Maintain and promote healthy woodlands through the use of sustainable forest management practices.
- 2) Enhance open land management to provide a diversity of food and cover habitats that encourage early successional plants and control invasive plant species to minimize negative impacts on natural plant communities.
- 3) Maintain and promote healthy wetland habitats.

**Management Objective 1:** Improve the health of forest and woodland communities to benefit wildlife, increase diversity of natural communities, and where possible, provide recreation opportunities.

**Strategy 1:** Manage woodlands using management techniques including, but not limited to, mechanical treatments and prescribed fire to obtain desirable structure and species composition. (Wildlife)

**Strategy 2:** Identify invasive species during forest inventories and by casual observations. Use appropriate treatments, as needed, for management and control of selected species. (Wildlife)

**Strategy 3:** Utilize best management practices during forest and woodland management as described in the Department's manuals: *Missouri Watershed Protection Practices Recommended for Missouri Forests: 2014 Management Guidelines for Maintaining Forested Watershed to Protect Streams* (Missouri Department of Conservation, 2014) and the *Missouri Forest Management Guidelines: Voluntary Recommendations for Well-Managed Forests* (Missouri Department of Conservation, 2014). (Wildlife, Forestry)

**Strategy 4:** Use the current forest inventory for management decisions until the new inventory is conducted in 2025. Implement recommendations from the new inventory at that time. (Forestry)

**Management Objective 2:** Manage open grassland and old fields in a manner that provides early successional habitat to improve upland wildlife populations.

**Strategy 1:** Utilize agricultural equipment for soil disturbances to benefit wildlife. (Wildlife)

**Strategy 2:** Fallow standing crop in fields and plant legumes to attract insects and improve brood rearing cover for upland birds. (Wildlife)

**Strategy 3:** Renovate fields of fescue and smooth brome with native grasses/forbs to restore habitat for species of conservation concern and to benefit small game. (Wildlife)

**Strategy 4:** Manage old fields and grasslands to maintain early successional habitat, and control herbaceous and woody invasive plant species. (Wildlife)

**Management Objective 3:** Manage or enhance wetlands in a manner that provides moist soil habitats and improves vegetative diversity.

**Strategy 1:** Manipulate seasonal water levels to encourage native plants. (Wildlife)

**Strategy 2:** Identify invasive species through casual observations and use appropriate treatments, as needed, for management and control of selected species. (Wildlife)

## VI. Aquatic Resource Management Considerations

### **Challenges and Opportunities:**

- 1) Manage riparian corridor.
- 2) Reduce extensive bank erosion.
- 3) Manage fishless ponds.

**Management Objective 1:** Ensure healthy and stable stream corridors.

**Strategy 1:** Maintain or establish 100-foot riparian buffers along waterways, through natural regeneration or planting. (Wildlife)

**Strategy 2:** All management activities on Gallatin CA should follow the *Watershed and Stream Management Guidelines for Lands and Waters Managed by the Missouri Department of Conservation* (Missouri Department of Conservation, 2009). Any field road stream crossings or riparian corridors not meeting these standards will be corrected by 2018. (Wildlife, Forestry)

**Strategy 3:** Monitor for invasive vegetation and replace with native plantings, as necessary. (Wildlife)

**Management Objective 2:** Provide suitable habitat for amphibians and reptiles in ponds with no fisheries management potential.

**Strategy 1:** Inventory and manage fishless ponds for appropriate species. (Wildlife)

## VII. Public Use Management Considerations

### **Challenges and Opportunities:**

- 1) Enhance hunting and trapping opportunities and non-game recreational opportunities.
- 2) Provide safe shooting ranges.
- 3) Build relationships with neighboring landowners.

**Management Objective 1:** Provide public hunting, trapping, and non-game recreational opportunities.

**Strategy 1:** Implement annual management activities, targeting improvement of terrestrial and aquatic habitat to improve wildlife populations. (Wildlife)

**Strategy 2:** Provide access points for disabled users. (Wildlife)

**Strategy 3:** Maintain service roads and trails to provide access for hunting, wildlife watching, hiking, and other non-game recreational opportunities. (Wildlife)

**Strategy 4:** Issue special use permits to allow trapping on area. (Wildlife)

**Management Objective 2:** Provide shotgun and rifle shooting ranges.

**Strategy 1:** Maintain the infrastructure on the rifle range and shotgun range to established standards for a positive shooting experience. (Wildlife)

**Strategy 2:** Maintain the firearms ranges in accordance with the *2013 Shooting Range Facility Program Manual* (Missouri Department of Conservation, 2013). (Wildlife, Outreach and Education, Design and Development)

**Strategy 3:** Evaluate the safety and accessibility of the range to all users. Submit appropriate requests for capital improvement and/or small construction projects as necessary. (Outreach and Education, Design and Development, Wildlife)

**Strategy 4:** Maintain the boundary fence and signage around both ranges. (Wildlife)

**Strategy 5:** Inspect condition of both ranges no less than once per month. (Wildlife)

**Management Objective 3:** Promote positive working relationships with neighboring landowners.

**Strategy 1:** Respond to neighbors with request for shared fencing, boundary issues, or trespass problems. (Wildlife)

**Strategy 2:** Promote habitat management on neighboring landowner properties. (Private Land Services, Wildlife)

## VIII. Administrative Considerations

### **Challenges and Opportunities:**

- 1) Maintain area infrastructure at current levels.
- 2) Maintain clearly marked boundary lines.
- 3) Inform the public of area regulations.
- 4) Consider land acquisition, when available.

**Management Objective 1:** Maintain area infrastructure at level established by policy.

**Strategy 1:** Maintain area infrastructure in accordance with Department guidelines. (Wildlife)

**Management Objective 2:** Maintain clearly identified property lines.

**Strategy 1:** Inspect and maintain boundaries on a regular cycle. (Wildlife)

**Strategy 2:** Resolve boundary issues with adjoining landowners as they arise. (Wildlife)

**Management Objective 3:** Inform public about area regulations.

**Strategy 1:** Maintain signs according to Department policy. (Wildlife)

**Strategy 2:** Maintain accurate and timely information on the Department's Atlas Database. Review information annually. (Wildlife)

**Lands Proposed for Acquisition:**

When available, adjacent land may be considered for acquisition from willing sellers. Tracts that improve area access, provide public use opportunities, contain unique natural communities and/or species of conservation concern, or meet other Department priorities, as identified in the annual Department land acquisition priorities, may be considered.



## MANAGEMENT TIMETABLE

Strategies are considered ongoing unless listed in the following table:

	FY 17	FY 18	FY 19	FY 20	FY 21	FY 22	FY 23	FY 24	FY 25	FY 26	FY 27	FY 28	FY 29	FY 30	FY 31	FY 32	FY 33	FY 34	FY 35	FY 36
<b>Terrestrial Resource Management</b>																				
<i>Objective 1</i>																				
Strategy 1	X				X				X				X				X			
Strategy 4									X											
<i>Objective 2</i>																				
Strategy 1	X		X		X		X		X		X		X		X		X		X	
Strategy 2		X		X		X		X				X		X		X		X		
<b>Aquatic Resource Management</b>																				
<i>Objective 2</i>																				
Strategy 1				X										X						

## APPENDICES

### Area Background:

Gallatin Conservation Area (CA) is located in southern Daviess County, 5 miles south of Gallatin on Highway 13 and 0.5 miles east on Route M. The landscape is nearly half forest/woodland and half a diverse mixture of old fields, cropland, and grassland (Figure 5).

The Missouri Department of Conservation created this area in 1969 with the purchase of 529 acres from a single landowner with funding through the Pittman-Robertson Wildlife Restoration Act, administered by the U. S. Fish and Wildlife Service. Two years later, an additional 140 acres were purchased in two parcels to increase the area to its current size through funding from the Land and Water Conservation Fund.

Gallatin Conservation Area has a three-station rifle range with shooting lanes at 25, 100, and 200 yards, as well as a shotgun patterning range marked at intervals from 20 to 40 yards.

### Current Land and Water Types:

Land/Water Type	Acres	% of Area
Woodland	393	59
Old Field	146	22
Grassland (non-prairie)	97	14
Wetland	22	3
Infrastructure	10	1
Open Water	2	<1
<b>Total</b>	<b>670</b>	<b>100</b>

### Public Input Summary:

The draft Gallatin Conservation Area Management Plan was available for public comment period October 1-31, 2016. The Missouri Department of Conservation received no comments during this time.

### References:

Missouri Department of Conservation. (2004). *Gallatin Conservation Area forest resource management plan*. Jefferson City, MO: Missouri Department of Conservation

Missouri Department of Conservation. (2009). *Watershed and stream management guidelines for lands and waters managed by Missouri Department of Conservation*. Jefferson City, MO: Missouri Department of Conservation.

Missouri Department of Conservation. (2013). *2013 Shooting range facility program manual*. Jefferson City, MO: Missouri Department of Conservation.

Missouri Department of Conservation. (2014). *Missouri forest management guidelines: Voluntary recommendations for well-managed forests*. Jefferson City, MO: Conservation Commission of the State of Missouri.

Missouri Department of Conservation. (2014). *Missouri watershed protection practice recommended practices for Missouri forests: 2014 management guidelines for maintaining forested watersheds to protect streams*. Jefferson City, MO: Conservation Commission of the State of Missouri.

Nigh, T. A., & Schroeder, W. A. (2002). *Atlas of Missouri ecoregions*. Jefferson City, MO: Missouri Department of Conservation.

**Maps:**

Figure 1: Area Map

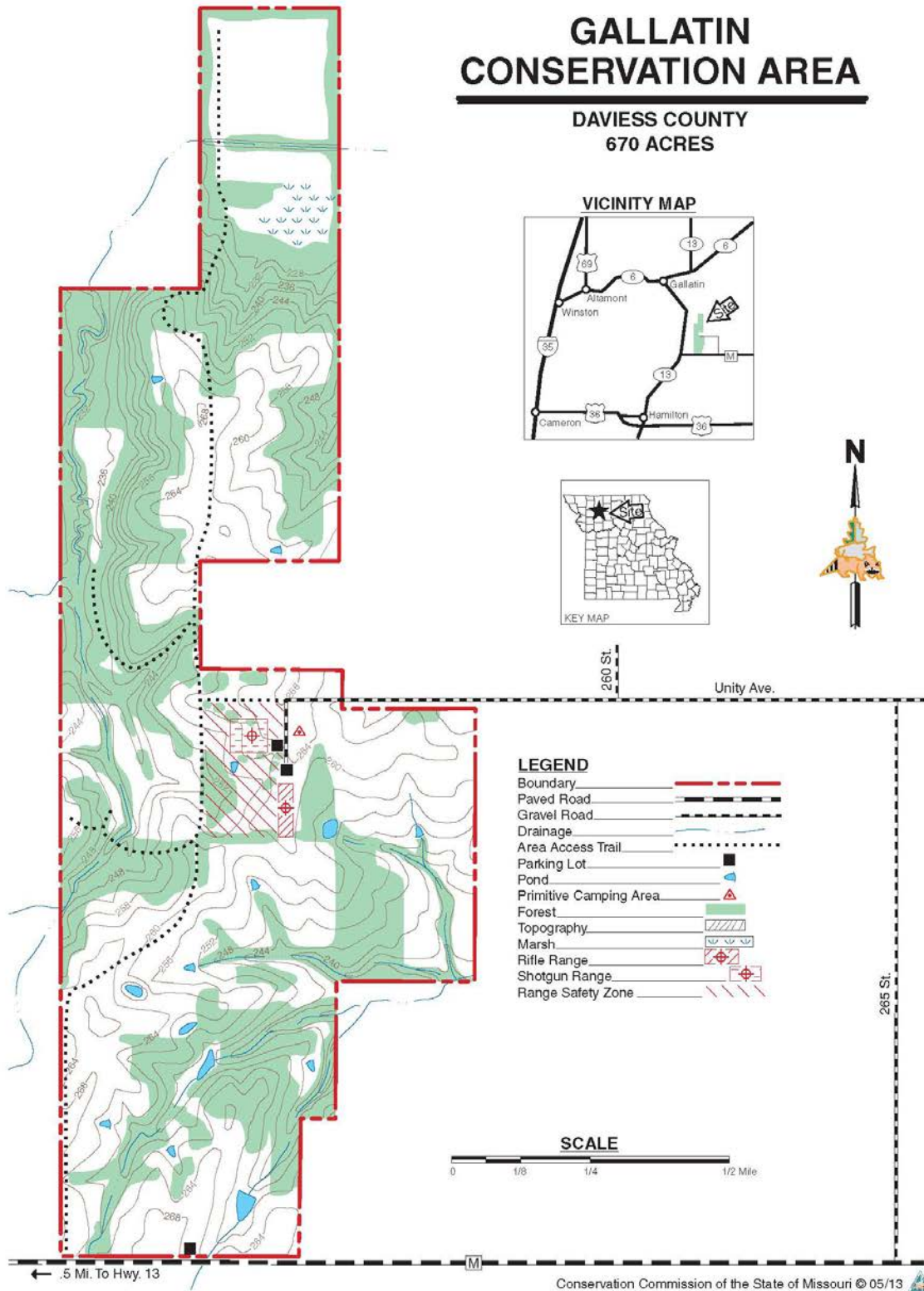
Figure 2: Funding Sources for Acquisition and Easement Map

Figure 3: Forest/Woodland Prescription Map

Figure 4: Land Cover Map

Figure 5: Ecological Site Description Map

Figure 1: Area Map





**Figure 2: Funding Sources for Acquisition and Easement Map**

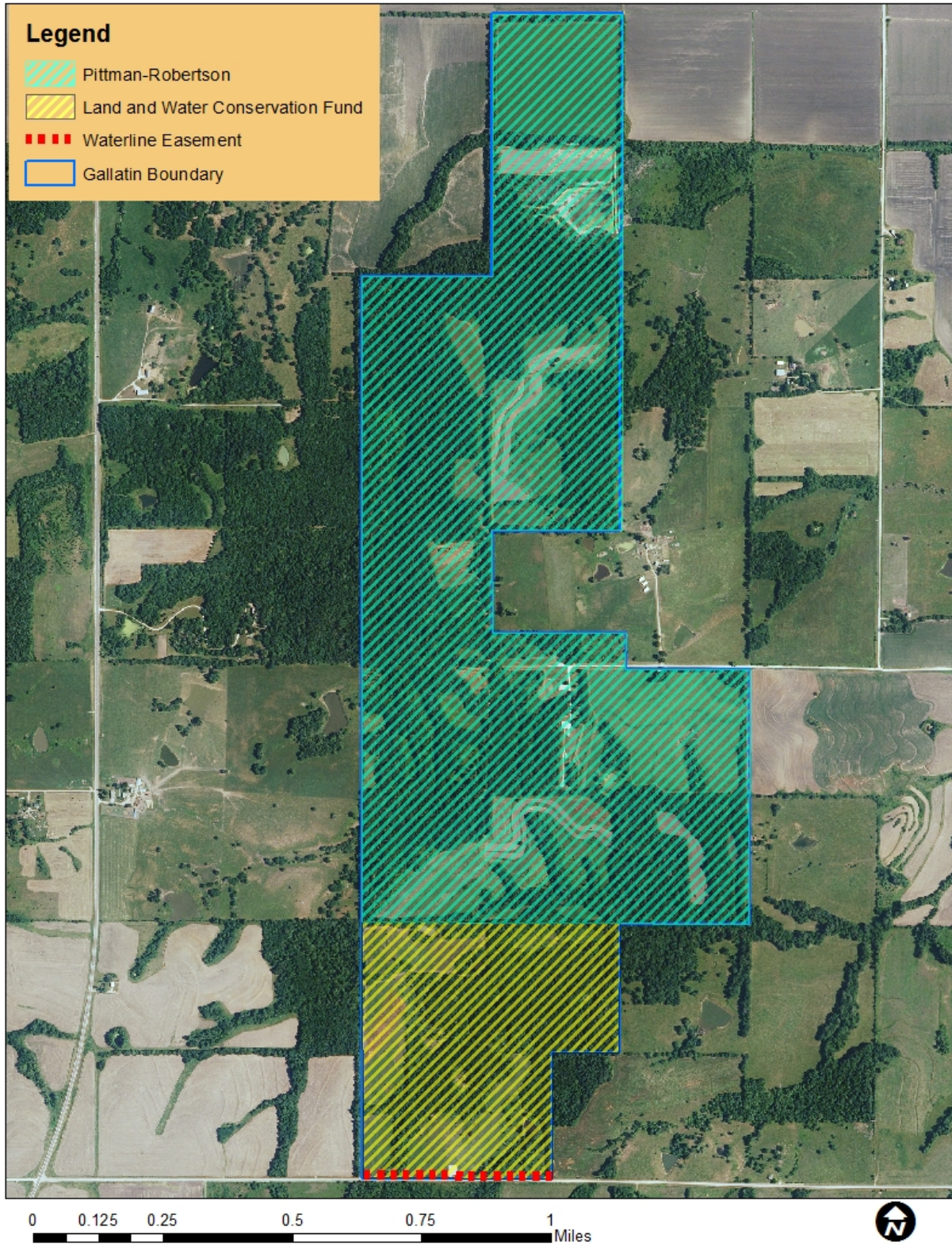




Figure 3: Forest/Woodland Prescription Map

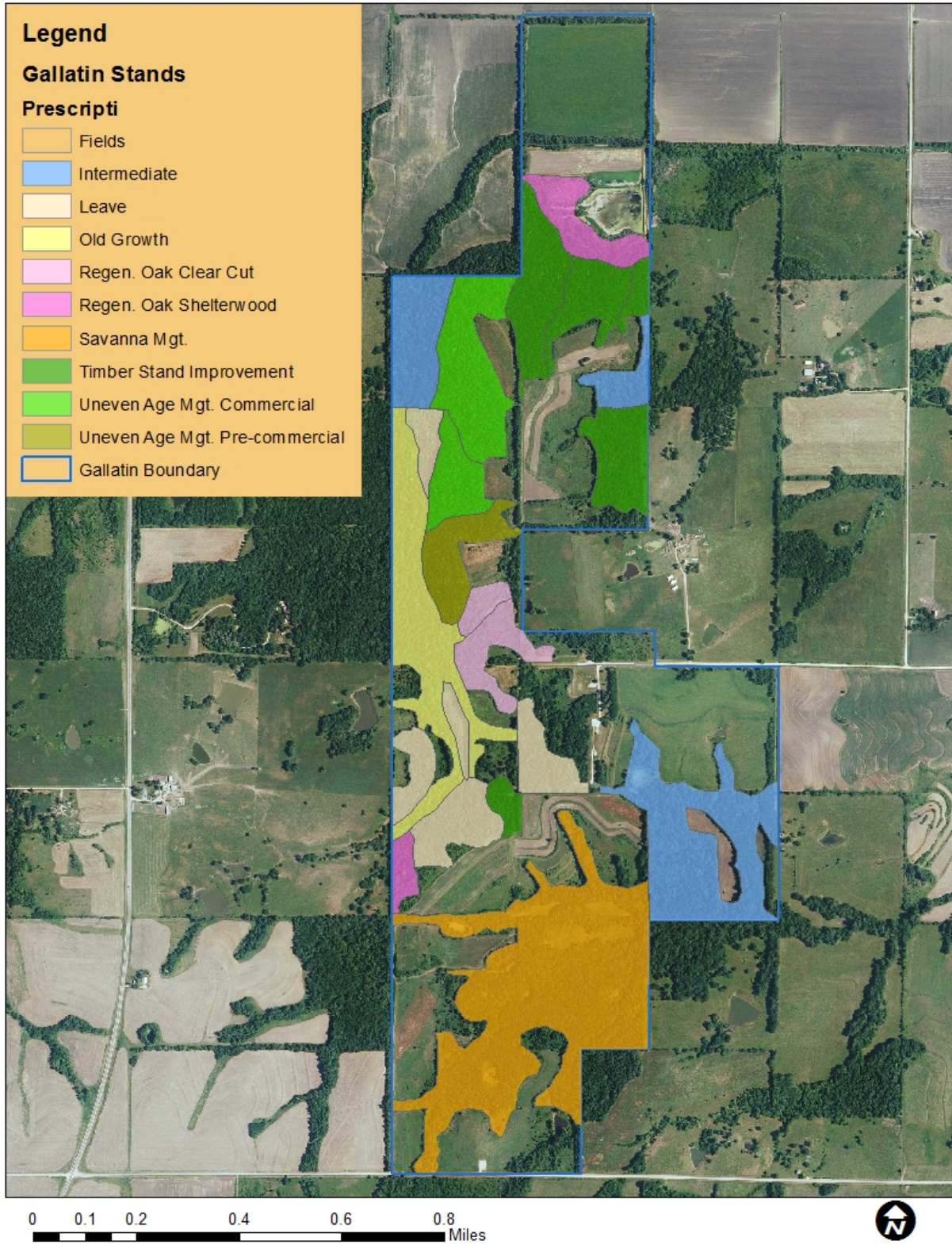
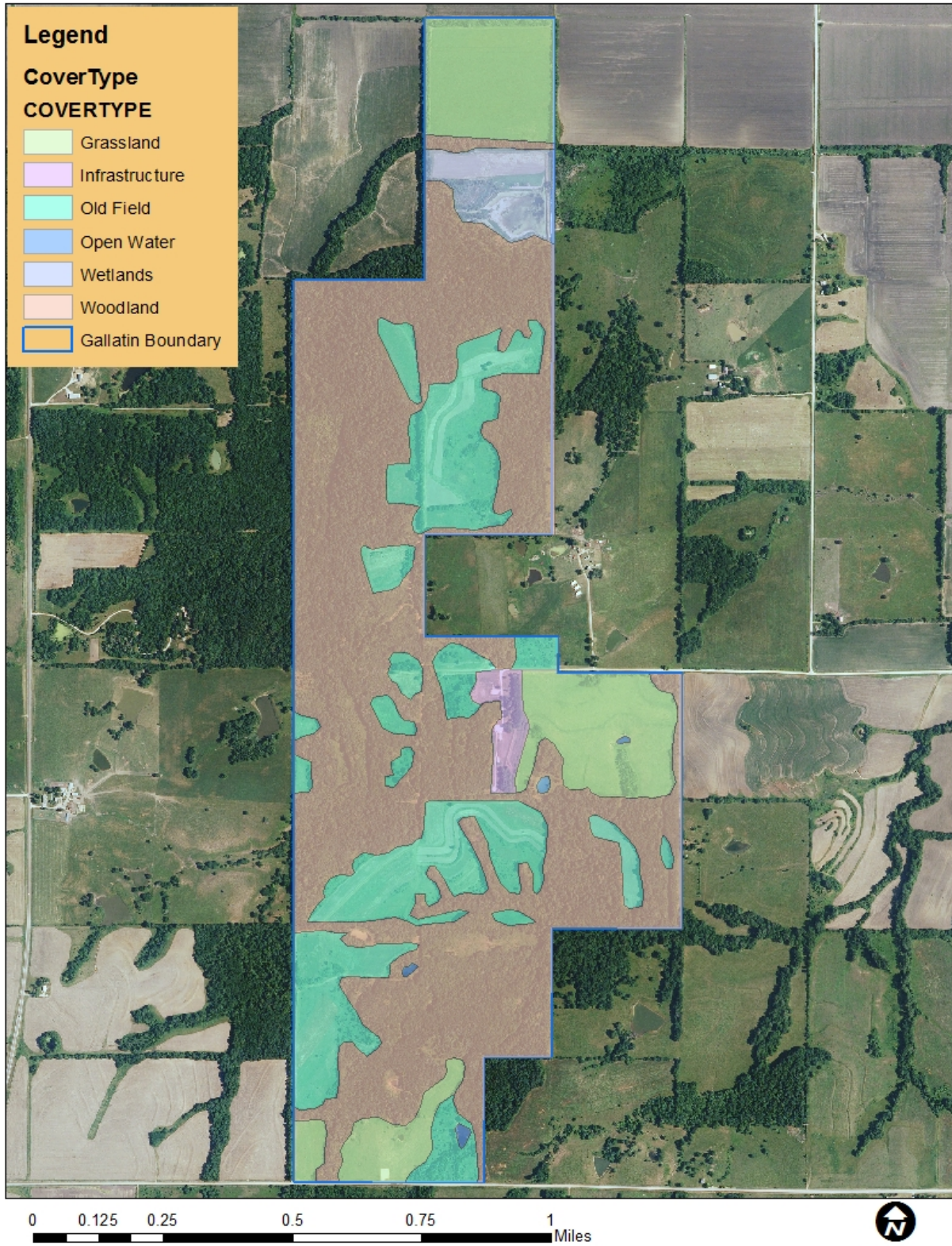




Figure 4: Land Cover Map





**Figure 5: Ecological Site Description Map**

