

# Edward Anderson Conservation Area & DuPont Reservation Conservation Area

Ten-Year Area Management Plan  
FY 2017-2026



*Lisa B. Allen*

Forestry Division Chief

*12-14-16*

Date

**Edward Anderson Conservation Area & DuPont Reservation Conservation  
Area Management Plan Approval Page**

**PLANNING TEAM**

David Vance, Resource Forester

Mike Flaspohler, Wildlife Management Biologist

Chris Williamson, Fisheries Management Biologist

Krista Noel, Natural History Biologist

Mike Christensen, Conservation Agent

Rob Garver, Outdoor Skills Specialist

Tim Brooks, Private Land Conservationist

**NORTHEAST REGION**

RCT Chair


  
Signature

  
Date

**FORESTRY DIVISION**

Forest Management Chief

  
Signature

  
Date

## OVERVIEW

Area Name	Area Number	Year Acquired	Acreage	County	Administrative Responsibility	Maintenance Responsibility
Edward Anderson Conservation Area (Anderson CA)	6311	1963	1,046	Ralls, Pike	Forestry	Wildlife
DuPont Reservation CA	4604	1938	1,320	Pike	Forestry	Wildlife

### Statements of Purpose:

#### A. Strategic Direction

Management of these areas will focus on maintaining the areas to allow for multiple public uses and conserving and managing the areas' natural resources.

#### B. Desired Future Condition

The desired future condition of Anderson CA and DuPont Reservation CA is a healthy forest community consisting of upland and bottomland forests with a few small, interspersed open fields comprised of grassland and old field; and to provide high quality riparian areas along the Mississippi River, its tributaries, and the associated watershed.

#### C. Federal Aid Statement

- Anderson CA: This area, or a portion thereof, was acquired with Pittman-Robertson Wildlife Restoration funds to restore and manage wildlife, conserve, and restore suitable wildlife habitat and provide public access for hunting or other wildlife-oriented recreation.
- DuPont Reservation CA: This area, or a portion thereof, was acquired with Land and Water Conservation Fund dollars to provide land or facilities for public outdoor recreation.

## GENERAL INFORMATION AND CONDITIONS

### I. Special Considerations

Area Name	Priority Areas	Natural Areas
Anderson CA	DuPont Complex Terrestrial Conservation Opportunity Area, Ted Shanks Important Bird Area	None
DuPont Reservation CA	DuPont Complex Terrestrial Conservation Opportunity Area, Ted Shanks Important Bird Area	Yes <sup>1</sup>

<sup>1</sup> DuPont Natural Area is found east of Highway 79. This 80-acre tract includes dry-mesic and mesic loess/glacial till forest and dry-mesic chert forest communities with mature to old second-

growth trees. Basswood, northern red oak, white oak, chinquapin oak, and sugar maple are common overstory trees.

## II. Important Natural Features and Resources

Area Name	Species of Conservation Concern	Caves	Springs
Anderson CA	Yes <sup>1</sup>	None	None
DuPont Reservation CA	Yes <sup>2</sup>	None	None

<sup>1</sup> Species of conservation concern are not known from this site, but are found in the surrounding area. Area managers should consult annually with the natural history biologist.

<sup>2</sup> Species of conservation concern are known from this area. Area managers should consult the Natural Heritage Database annually and review all management activities with the natural history biologist.

## III. Existing Infrastructure

Area Name	Parking Lots	Concrete Boat Ramp	Privy	Other
Anderson CA	1	None	None	Campground (at parking lot), radio tower
DuPont Reservation CA	3 <sup>1</sup>	1	1 <sup>1</sup>	Campground (with 20 camping pads), storage shed, 1.5 miles of gravel road open to public access

<sup>1</sup> Americans with Disabilities Act (ADA) accessible

## IV. Area Restrictions or Limitations

Area Name	Deed Restrictions/ Ownership Considerations	Federal Interest	Ease-ments	Cultural Resources	Endangered Species	Boundary Issues
Anderson CA	None	Yes <sup>2</sup>	Yes <sup>5,6</sup>	None	Yes <sup>8</sup>	None
DuPont Reser- vation CA	Yes <sup>1</sup>	Yes <sup>3,4</sup>	Yes <sup>6</sup>	Yes <sup>7</sup>	None observed	None

<sup>1</sup> The Missouri Department of Transportation maintains two scenic overlooks.

<sup>2</sup> Uses of land acquired with federal funds may not interfere with the purpose for which it was acquired. Federal funds may also be used in the management of this land. Fish and wildlife agencies may not allow recreational activities and related facilities that would interfere with the purpose for which the State is managing the land. Other uses may be acceptable and must be assessed in each specific situation.

<sup>3</sup> Federal funds were used in the development of this area, or a portion thereof. The Department must maintain the developed project throughout its useful life. Federal funds may also be used in the management of this land. Fish and wildlife agencies may not allow recreational activities and related facilities that would interfere with the purpose for which the State is managing the land. Other uses may be acceptable and must be assessed in each specific situation.

<sup>4</sup>This land must provide land/facilities for public outdoor recreation in perpetuity. Federal funds may also be used in the management of this land. Fish and wildlife agencies may not allow recreation activities and related facilities that would interfere with the purpose for which the State is managing the land. Other uses may be acceptable and must be assessed in each specific situation.

<sup>5</sup>Public Water Supply District #1 of Ralls County for placement of the water tower

<sup>6</sup>Railroad right of way and Missouri Department of Transportation right of way

<sup>7</sup>Records are kept with Missouri Department of Conservation (the Department) environmental compliance specialist. Managers should follow best management practices for cultural resources found in the Department Resource Policy Manual.

<sup>8</sup>Endangered Species are not known from this site, but are found in the surrounding area. Area managers should consult annually with the natural history biologist.

## MANAGEMENT CONSIDERATIONS

### V. Terrestrial Resource Management Considerations

#### **Challenges and Opportunities:**

- 1) The 35 acres of open land on DuPont Reservation CA are comprised of open agricultural and grassland fields that provide limited wildlife management opportunities.
- 2) Both areas are located along the Mississippi River, and consist of steep slopes and rough terrain. Topography limits traditional forest management opportunities in many portions of both areas.

**Management Objective 1:** Use agricultural techniques to provide food and cover for wildlife.

**Strategy 1:** Use management techniques including but not limited to mowing, disking, spraying, and prescribed fire to maintain the grassland and promote early successional vegetation. (Wildlife)

**Management Objective 2:** On appropriate sites, manage forest communities to provide healthy and diverse habitats for forest/woodland-dependent wildlife.

**Strategy 1:** Conduct a forest inventory by compartment with an estimated re-entry time of 15 years or as needed. (Forestry)

**Strategy 2:** Implement silvicultural practices as prescribed by the detailed forest inventory process including the marking and selling of trees found on accessible portions of the areas. (Forestry)

**Strategy 3:** Implement forest thinning on portions of the areas as recommended by the most recent forest inventory. (Forestry)

**Strategy 4:** Manage inaccessible forested areas as old growth forests allowing natural processes to unfold. (Forestry)

**Strategy 5:** Utilize best management practices during timber harvest, as described in the Department's manuals: *Missouri Watershed Protection Practice* manual (Missouri Department of Conservation, 2014) and the *Missouri Forest Management Guidelines Voluntary Recommendations for Well-Managed Forests* (Missouri Department of Conservation, 2014). (Forestry)

**Management Objective 3:** Control invasive plant species on the conservation areas.

**Strategy 1:** Contract with aerial applicator to treat bush honeysuckle. (Forestry)

**Strategy 2:** Monitor area treated using aerial application the following growing season to ensure success. (Forestry)

**Strategy 3:** Annually monitor and eradicate invasive species. (Forestry)

## VI. Aquatic Resource Management Considerations

### **Challenges and Opportunities:**

- 1) Anderson CA has 2.3 miles of Mississippi River frontage. However, steep topography prevents constructing access roads and parking lots.
- 2) One first-order tributary to the Mississippi River flows through Anderson CA.
- 3) Three first-order tributaries to the Mississippi River and one first-order tributary to the Salt River flow through DuPont Reservation CA. While these streams are ephemeral, they provide important ecosystem functions and seasonal habitat for aquatic organisms.

**Management Objective 1:** Maintain a forested corridor along all streams on the areas.

**Strategy 1:** Maintain a forested corridor through natural regeneration or planting. A minimum corridor width of 200 feet should be maintained along the Mississippi River. On other streams, a minimum width of 100 feet should be maintained, where not limited by area boundary or utility easement. (Forestry)

**Strategy 2:** All management activities on Anderson CA and DuPont Reservation CA should follow the *Watershed and Stream Management Guidelines for Lands Managed by the Missouri Department of Conservation* (Missouri Department of Conservation, 2009). (Forestry)

## VII. Public Use Management Considerations

### **Challenges and Opportunities:**

- 1) These areas offer multiple public use opportunities for outdoor recreation and education, including hunting, fishing, camping, wildlife viewing, and hiking.

DuPont Reservation CA has 1.3 miles of Mississippi River frontage. A concrete boat ramp with a parking lot provides boating and bank angler access.

**Management Objective 1:** Provide hunting and fishing opportunities on the areas by maintaining area facilities to provide user access and safety.

**Strategy 1:** Maintain existing parking lots, bulletin boards, boat ramp, campground, privies, and field roads to facilitate use by area users. (Wildlife)

**Strategy 2:** Maintain existing mowed areas along river to facilitate bank fishing. (Wildlife)

**Strategy 3:** Maintain boat ramp by cleaning after flooding to facilitate boat launching. (Wildlife)

**Management Objective 2:** Provide convenient and safe access for nature viewers and hikers on the conservation areas.

**Strategy 1:** Maintain current service roads and access paths. (Forestry)

**Management Objective 3:** Inform public about area regulations.

**Strategy 1:** Maintain signs according to Department policy. (Wildlife)

**Strategy 2:** Maintain accurate and timely information on the Department's Atlas Database. Review information annually. (Forestry)

**Management Objective 4:** Maintain area infrastructure at current levels.

**Strategy 1:** Maintain area infrastructure in accordance with Department guidelines and at currently identified maintenance level (2). (Wildlife)

## VIII. Administrative Considerations

### **Challenges and Opportunities:**

- 1) Illegal use of all-terrain vehicles on the conservation areas has been an issue from time to time.

**Management Objective 1:** Discourage illegal all-terrain vehicle use through enforcement and trail closures.

**Strategy 1:** Monitor areas for illegal all-terrain vehicle use. (Protection)

**Strategy 2:** Identify trails used by all terrain vehicles and close them by making them impassible. (Forestry)

**Strategy 3:** Regularly patrol and enforce the wildlife code, with emphasis on off-trail abuse, vandalism, littering and response to public comments. (Protection, Forestry)





## APPENDICES

### Public Input Summary:

The draft Anderson & DuPont Conservation Areas Management Plan was available for public comment period June 1-30, 2016. The Missouri Department of Conservation received no comments during this time period.

### References:

Missouri Department of Conservation. (2009). *Watershed and stream management guidelines for lands managed by the Missouri Department of Conservation*. Jefferson City, MO: Missouri Department of Conservation.

Missouri Department of Conservation. (2014). *Missouri forest management guidelines voluntary recommendations for well-managed forests*. Jefferson City, MO: Conservation Commission of the State of Missouri.

Missouri Department of Conservation. (2014). *Missouri watershed protection practice recommended practices for Missouri forests: 2014 management guidelines for maintaining forested watersheds to protect streams*. Jefferson City, MO: Conservation Commission of the State of Missouri.

### Appendices:

Appendix 1. Anderson CA Background

Appendix 2. Anderson CA Area Map

Appendix 3. Anderson CA Aerial Map

Appendix 4. Anderson CA Land Cover Types and Easements

Appendix 5. DuPont Reservation CA Background

Appendix 6. DuPont Reservation CA Area Map

Appendix 7. DuPont Reservation CA Aerial Map

Appendix 8. DuPont Reservation CA Land Cover Types and Easements

Appendix 9. Conservation Opportunity Area Map – Anderson CA and DuPont Reservation CA

## Appendix 1. Anderson CA Background

In 1963, Edward Anderson, a local landowner, donated 500 acres for this area to the Department. Later purchases by the Department brought the area to its present size of 1,046 acres.

This conservation area was acquired in part through the Pittman-Robertson Wildlife Restoration Act administered by the U.S. Fish and Wildlife Service.

Several small, intermittent streams traverse the hilly terrain and drain into the Mississippi River. Although the area is bordered by 2.3 miles of Mississippi River, access to the river is limited.

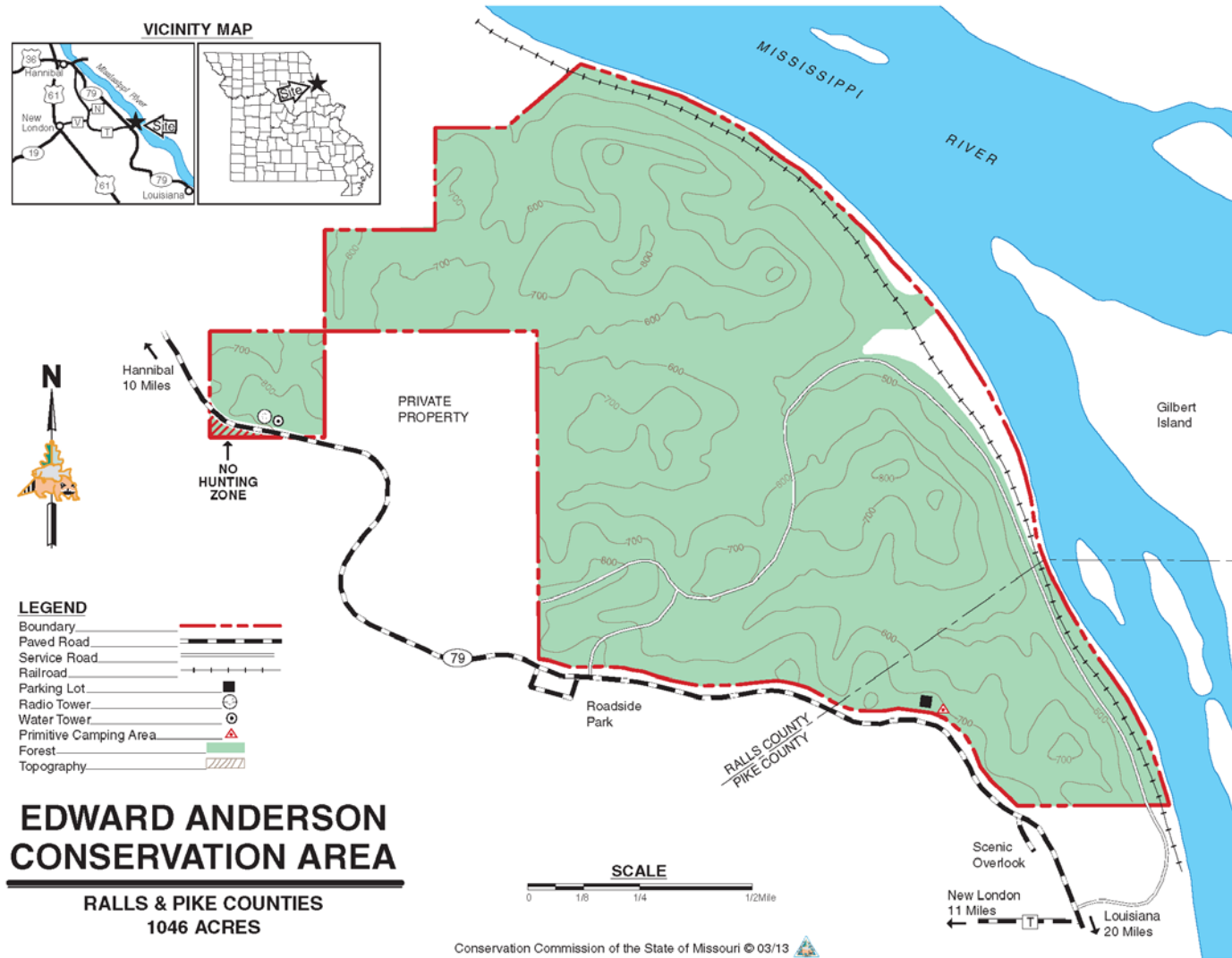
Two large sink holes are located about 0.5 miles northeast of the tower site, adjacent to Highway 79, about 1 mile north of Hallows Roadside Park.

The highest point in Ralls County (804 feet) is found on the area.

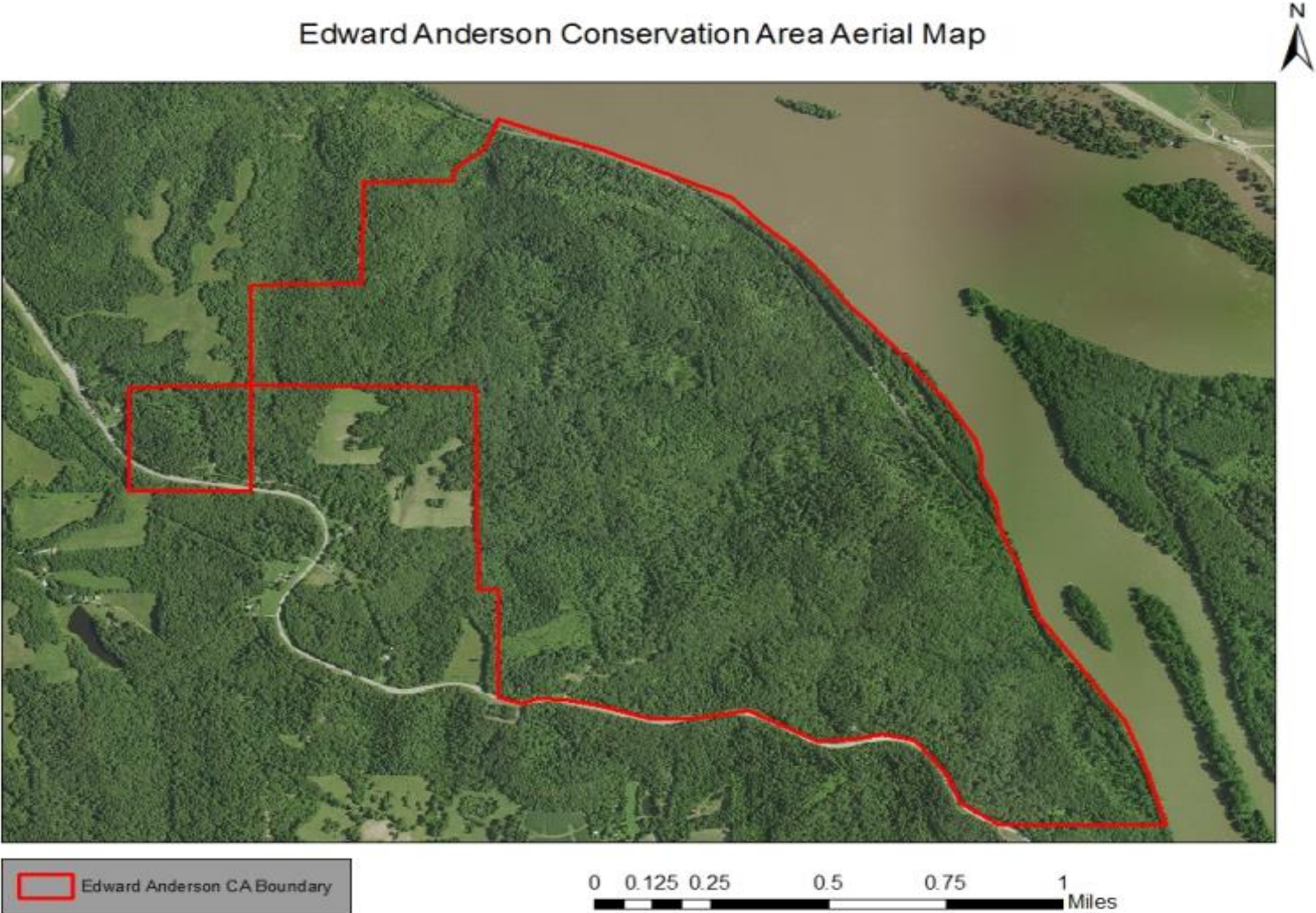
### Current Land and Water Types:

Land/Water Type	Acres	Miles	% of Area
Upland Forest	1,043		100
Old Fields/Upland Fields	3		<1
<b>Total</b>	<b>1,046</b>		<b>100</b>
Stream Frontage (Mississippi River)		2.3	

Appendix 2. Anderson CA Area Map



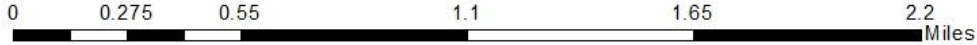
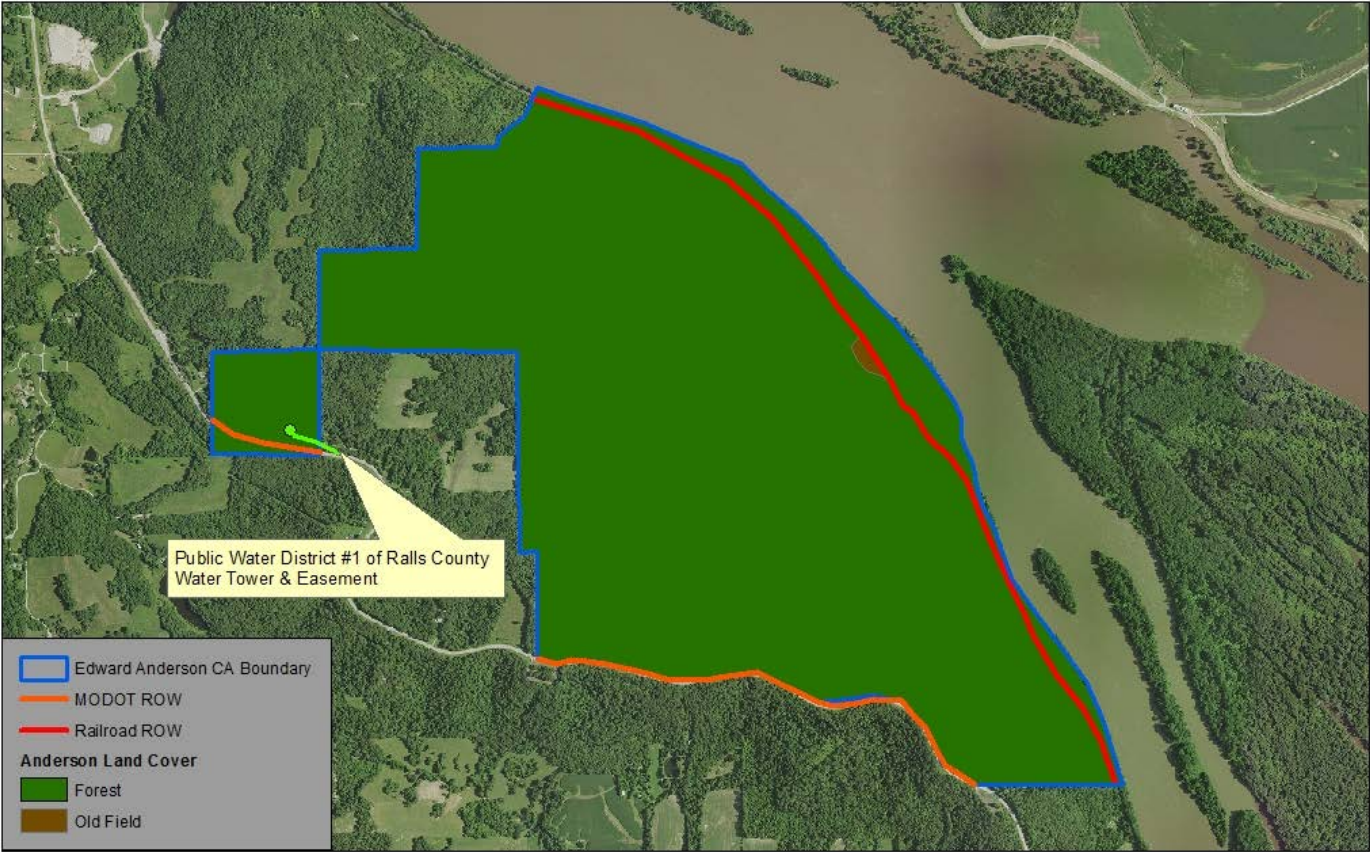
Appendix 3. Anderson CA Aerial Map





Appendix 4. Anderson CA Land Cover Types and Easements

Edward Anderson CA Land Cover Map



## Appendix 5. DuPont Reservation CA Background

From 1892 through 1932, a dynamite factory on this site provided explosives for lead, zinc, and coal mines in the tristate area and nitroglycerin for use in Oklahoma oil fields. Separate facilities were built in different valleys in this rough terrain to lessen the chance of a chain reaction explosion, should any one of the buildings explode.

E.I. DuPont de Nemours and Company (DuPont) donated 1,122.8 acres to the Conservation Commission in 1938. Subsequent land purchases have increased the size of this area to its present 1,320 acres.

The area consists of 975 acres of upland forest, 310 acres of bottomland forest and 35 acres of old fields and grassland. It also contains plantations of walnut, cottonwood, tulip poplar, pine, and bald cypress trees.

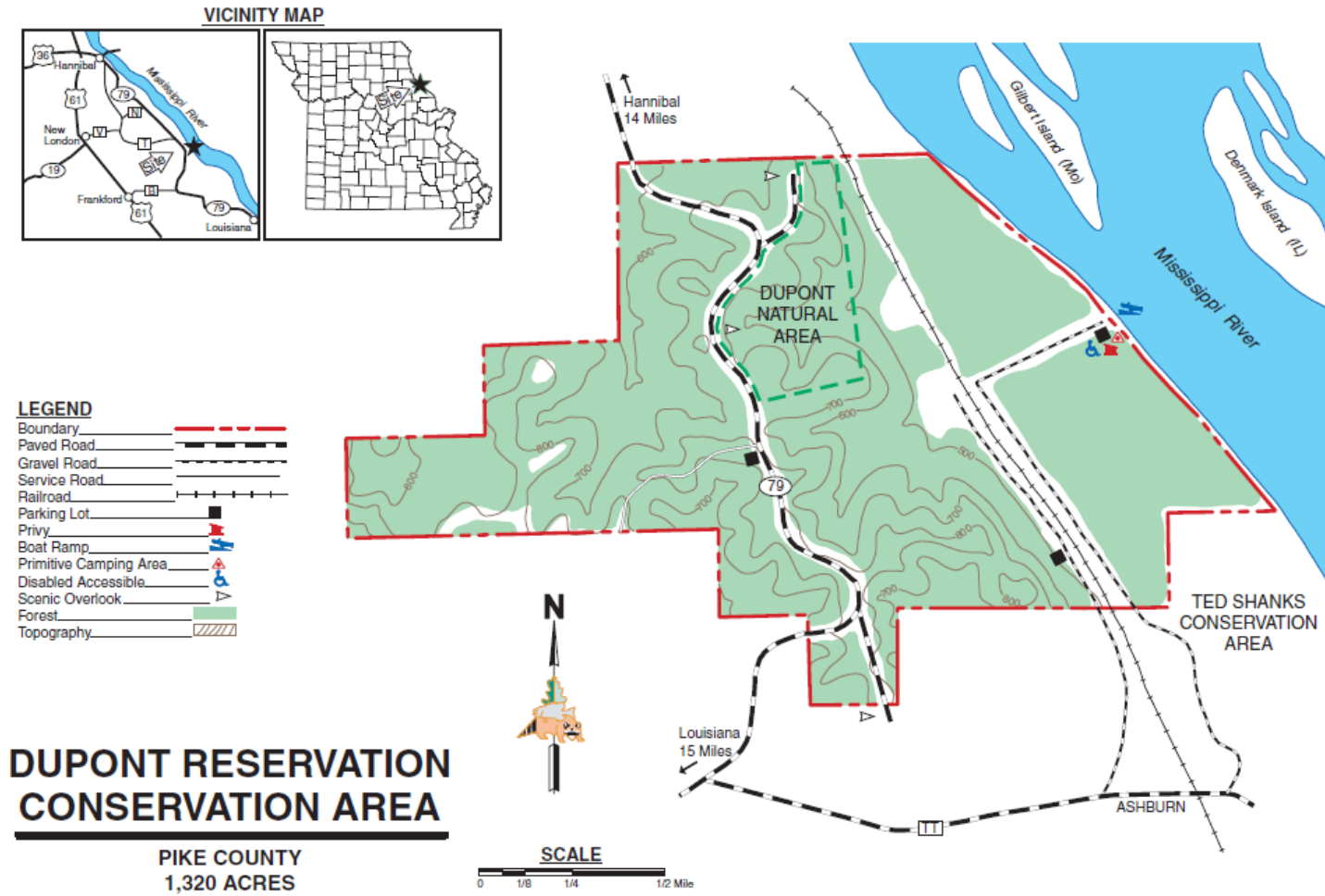
A boat access and primitive campground are located along a 1.5-mile portion of Mississippi River frontage.

DuPont Natural Area is found east of Highway 79. This 80-acre tract includes dry-mesic and mesic loess/glacial till forest and dry-mesic chert forest communities with mature to old second-growth trees. Basswood, northern red oak, white oak, chinquapin oak, and sugar maple are common overstory trees.

### Current Land and Water Types:

Land/Water Type	Acres	Miles	% of Area
Upland Forest	975		74
Bottomland Forest	310		23
Old Fields/Grasslands	35		3
<b>Total</b>	<b>1,320</b>		<b>100</b>
Stream Frontage (Mississippi River)		1.5	

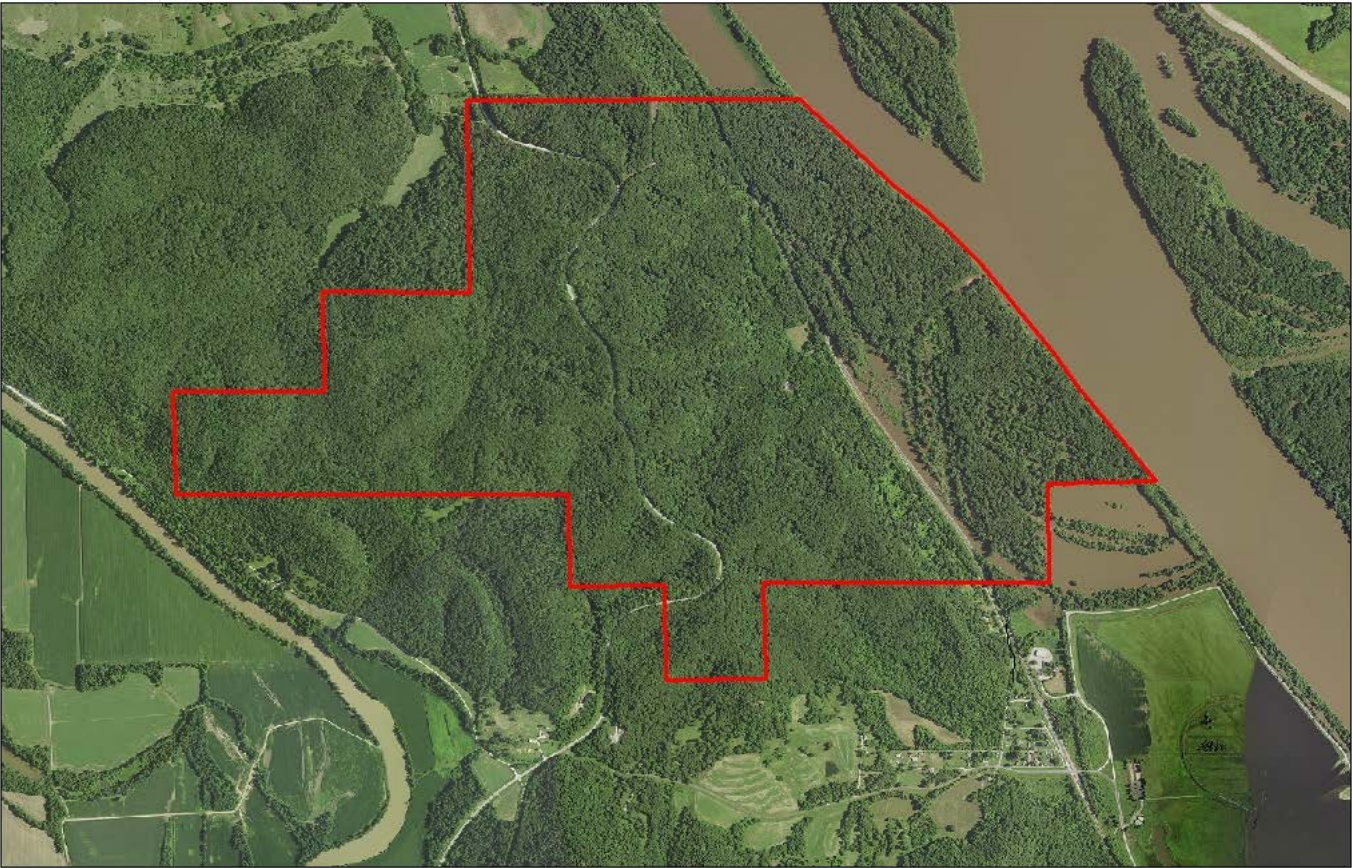
## Appendix 6. DuPont Reservation CA Area Map






Appendix 7. DuPont Reservation CA Aerial Map

DuPont Reservation Conservation Aerial Map



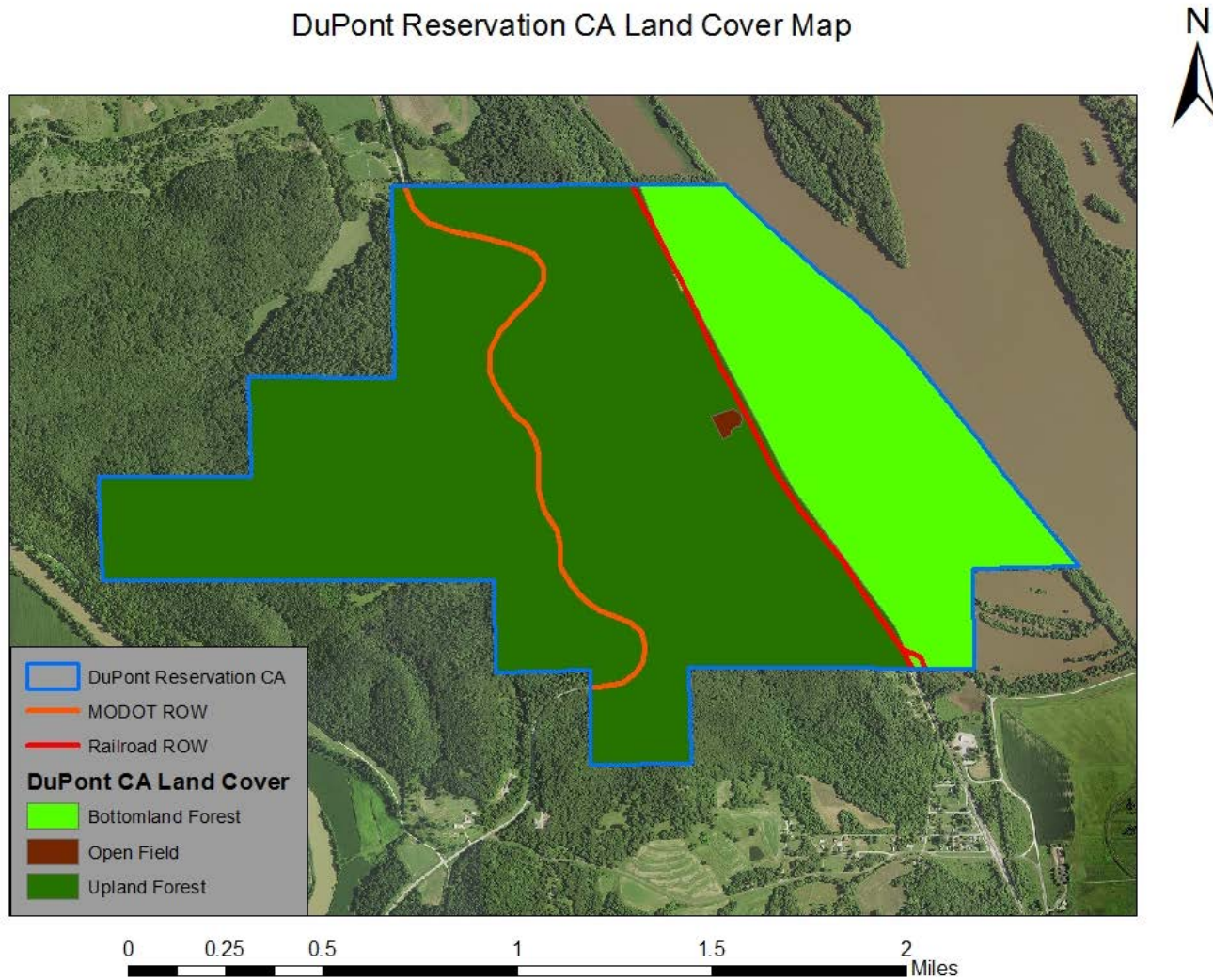
 DuPont Reservation CA

0 0.225 0.45 0.9 1.35 1.8 Miles



### Appendix 8. DuPont Reservation CA Land Cover Types and Easements

DuPont Reservation CA Land Cover Map



**Appendix 9. Conservation Opportunity Area Map**

Conservation Opportunity Area Map  
Anderson CA & DuPont Reservation CA

